



Whaley Bridge Allotment and Gardeners' Society



March 2010 Newsletter

STORE OPENS 28th MARCH!



How could you possibly resist buying from these people? The Store Team, left to right, comprises Gordon Belfield, Dave Parker, Dave Osborn (Store Manager) and Roger Wood.

OPENING HOURS

The store will be open on Sundays between 10.00 and 12 noon from March 28th to July 4th inclusive. It will also be open on a trial basis on Wednesdays between 18.00 and 19.00 from April 21st to June 16th.

STORE LIST

See "Garden Store Price List 2010". You will find the list attached to the Newsletter or to the covering e-mail if you receive it electronically. The prices benefit from bulk-buy discounts, are little more than cost and represent very good value for Members.

LOCATION OF STORE

If you are a first time customer, you may find the map showing the location of the store useful. See the document "Location of Store" attached.

TRANSPORT PROBLEMS

If you do not have a car, please don't feel deterred from using the Store. Speak to **Dave Osborn** (01663 733659). No promises – but It may be possible to find a solution.

FORMS OF PAYMENT

Please pay using cash or a cheque made out to WBAGS. Sorry, the team cannot handle credit cards.

MEMBERSHIP NEWS

We are delighted to welcome **Mary Townsend** of Chapel-en-le-Frith, **Jean Graves** of Whaley Bridge, **Neil Dainty** of Birch Vale and **Bill Bradshaw** of Tunstead Milton as new members.

Unfortunately, there are still some members who have not renewed their membership. Annual subscriptions were due in November 2009 or on the expiry date given on your membership card. If this is an oversight, please send your cheque, payable to WBAGS, to our Treasurer, **Bob Kellock**. (31, Meadow Close, Whaley Bridge, High Peak, SK23 7BD.) You will not receive the next or subsequent newsletters if your subscription remains unpaid.

TOOLS, SERVICES, DISCOUNTS AND KNOW-HOW

Please see our list of garden tools for borrowing, details of companies which provide services/discounts of possible interest to members and information about our useful collection of videos and magazines on gardening-related topics. See the document "Tools, Services, Discounts and Know-How" attached.

*****BOOK NOW*****

VISIT TO "THE HIMALAYAN GARDEN", RIPON.

Saturday, 8th MAY

Some 800 different types of rhododendrons and 150 different types of azaleas are to be seen in this

magnificent garden. It is located at 850' and incorporates woods, lakes and streams. It was awarded "Environment project of the Year 2009" by Yorkshire Rural Awards. A sculpture exhibition will be located there at the time of the visit. Feel a touch of the Orient and enjoy species brought from China, Nepal, India, Burma, Bhutan and Tibet! This visit represents excellent value at £24 including lunch and a talk. See "Diary Notes 2010" (sent out with the January Newsletter) and contact **Rosemary Kellock** (01663 733393) by 1 May latest if you wish to go. *****



Wild roses of the Himalayas – but you do not need to go so far to see beautiful flowers from this fascinating region.

www.website.forus

Now the Society has nearly 100 members on e-mail it does seem appropriate to have a website. In this modern age, it would raise the profile of the Society and be a ready, easy-to-use source of information for members and non-members alike. The Society could be more easily advertised and thus attract new interest. Two of our members have kindly offered to set up and run the web-site, subject to the

formal decision of the Committee to go ahead at the March committee meeting. They are **Mike High** and **Tim Newton**. The Committee is grateful for their commitment to the Society and their willingness to offer both time and skills.

OLDROYD RHUBARB SHEDS VISIT



On March 6th, 30 members visited the sheds, which have recently been given the

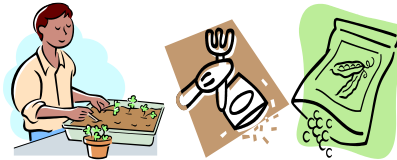
EC award of merit for their "Yorkshire Forced Rhubarb". This farm alone supplies all the forced and seasonal rhubarb requirements for three large supermarkets. The initial talk was interesting and informative and was followed by a look inside the dark, candlelit forcing sheds. Members of the group bought rhubarb and related products before having a pub lunch with a rhubarb theme (including rhubarb beer!). Raffle prizes were won by **Jean Graves**, **Linden Smith** and **Margaret Day**.

TALK "USING SPACE IN THE GARDEN" Roger Wood reports...

"On March 9th, 32 members attended this talk by Jane Allison and I am sure we all went away with ideas on how we can improve our plots. We had some initial problems with the projector, for which Jane apologised but otherwise the evening went well and thanks go to all involved in helping on the night. I certainly know of one member who has asked Jane to visit her to discuss a project. If anyone else is interested let me know (01663 732112), so we can perhaps organise a combined visit. There was a good selection of plants on sale, together with leaflets on plant fairs in the area, where Jane will be attending. A downside of the evening was that Jane managed to lock her keys in her car when packing everything away, so did not leave until late and arrived home at 1.30am. Her only comfort was that, according to the

breakdown team, it often happens with this model of car."

SEED TRIALS



Margaret Day writes on behalf of the Seed Trial Team....

"Following the announcement in the January newsletter about our seed trial, here is more information on what we propose to do. **Roger Wood**, **David Osborn** and I are using our own veg. plots to test out if Shelley's seeds are better than those from Kings and in Roger's case those from Thomson and Morgan and Suttons. Kings have for a number of years been the supplier of choice for allotment societies as their seeds are reasonably priced and the company offers good discounts to societies. However, one of our speakers in 2009, David Hampsey, grower of show vegetables, thought that Shelley's seeds were much better. He didn't say in what regards! We thought we would test this out.

This is what we plan to do

- (1) Grow the same veg. and variety from Shelley's and the comparator companies.
- (2) Compare cost of seed
- (3) Grow under the same conditions
- (4) Sow the same number of seeds and calculate % germination
- (5) Assess quality of produce using criteria such as yield, early maturity, disease resistance and appearance.

The list of veg. we are trying is
 Dwarf French Bean – Sprite
 Broad Bean – Aquadulce Claudia
 Spinach – Medania
 Radish – French Breakfast
 Carrot – St Valery
 Beetroot – Bolthardy
 Onion – Red Baron
 Onion – White Lisbon

We will report back in the Autumn Newsletter."

PLANT SWAP



Remember we will be holding our customary "Plant Swap" at the Store on 23 May 10.00 – 12.00. Come along with spare plants and select some to take away. You can still participate if you have no spares. Just make a small donation for any that you select.

SPARE AND WANTED

Petrol mower for sale. Contact **Julie Batten** 01663 763331

Petrol hedge trimmer for sale. Contact **Mary Howes** 01663 733579.

JULIE BATTEN'S OPEN DAY

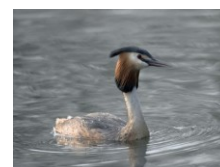
Julie, one of our members, is having an open day on Saturday 29 May from 12.30. It offers a mixture of stalls, quiz, raffles, auction and food (hot and cold). All proceeds will go to cancer research. 7, Dane Hill Close, Disley (opposite the Plough Boy pub on the Disley-Whaley Bridge top road. The house is at the end of Dane Hill Close. Cars may need to be left in Disley or parked in side roads.

LETTERS TO THE EDITOR

We plan to introduce Letters to the Editor on a trial basis in the June and November issues. If you have ideas about new Society activities or wish to comment on existing ones, please write to the Editor. 100 words maximum. Space will determine how many are included in the Newsletter.

GillMWilliamson@hotmail.com or 10 Linglongs Avenue, Whaley Bridge, SK23 7DT no later than 15 May.

PODICEPS CRISTATUS.....



will be back later in the year.